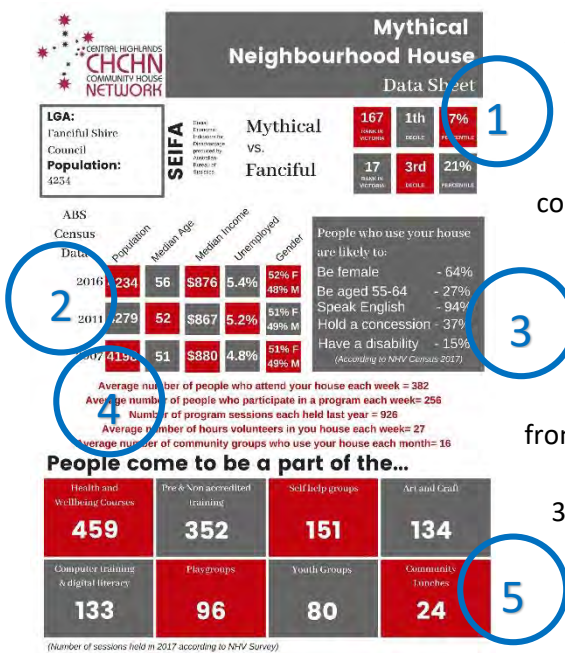




# READING YOUR DATA SHEET

Your data sheet captures some basic information on your house and your community, drawn from three separate sources:

- Australian Bureau of Statistics – 2016 Census information. The most complete and up to date data available, used by governments, not for profits and businesses for planning and funding. <http://www.abs.gov.au/>
- Neighbourhood Houses Victoria - Annual Survey 2017. Data on what and how your house is serving the community. Information is usually submitted by your coordinator in February each year. Copies of this and previous years are available via you coordinator.
- Neighbourhood Houses Victoria – Census 2016. Collected every two years, gathering details on individuals who visit your house over the course of a week. This information can be swayed by who has the time and interest in completing the form, although your coordinator will have endeavoured to capture an accurate spread of participants. Copy of your results via your coordinator.



1. This SEIFA Data Set indicates the relative socio economic disadvantage – the lower the score indicates the higher the disadvantage. Deciles and percentiles rank your score by 10<sup>th</sup> or 1%, respectively. How does your community compare to the wider local government area?

2. This ABS Data tracks some key elements of your community over the past three Census collections. How has your community changed over time? What other information about your community would you like to know from the Census?

3. This NHV Census is handy to compare with the ABS Census- compare gender and age group- who uses your house the most? Is this a good balance for you? Concession holders and people with a disability offers a little insight into the use of your house by vulnerable people.

4. This NHV Survey Data demonstrates the number of people passing through your house, and some of the reasons why they come. What does this tell you about the ways people participate in your house? What other information would you like to review from the NHV Survey? Talk to your coordinator about accessing this information.

5. This NHV Data shows what programs are delivered the most in your area. Anything surprise you here? Anything you think should be increased or decreased? Why? Review previous years- any changes?



# Ballarat Neighbourhood Centre Data Sheet

Local Government:  
Ballarat City Council

LGA Population:  
101,686 (ABS 2016)

**SEIFA** Social  
Economic  
Indicators for  
Disadvantage  
produced by  
Australian  
Bureau of  
Statistics

**Ballarat South (SA2)**

vs.

**Ballarat LGA**

<b>45</b> RANK IN VICTORIA	<b>1</b> DECILE	<b>10%</b> PERCENTILE
<b>29</b> RANK IN VICTORIA	<b>4</b> DECILE	<b>36%</b> PERCENTILE

ABS Census Data	Population	Median Age	Median Income	Unemployed	Gender
Total Ballarat 2016	101,686	38	\$1160	7.1%	51.9% F 48.1% M
2011	93,501	37	\$988	5.8%	52% F 48% M
2006	85,196	36	\$839	6.4%	52% F 48% M

The people who use  
Ballarat Neighbourhood  
Centre are likely to:

- Be female 76.6%
  - Be aged 30-44 39.4%
  - Hold a concession 58.5%
  - Have a disability 19.1%
- (According to NHV Census 2017)*

**Average number of people who attend your house each week = 410**

**Average number of people who participate in a program each week = 199**

**Number of program sessions held last year = 838**

**Average number of hours volunteered in your house each week = 27**

**Average number of community groups who use your house each month = 29**

## People come to be a part of the...

Pre & Non accredited training <b>265</b>	Personal counselling programs <b>245</b>	Computer training & digital literacy <b>96</b>	Literacy & numeracy training <b>64</b>
Health and wellbeing courses <b>42</b>	Community Newsletter/ newspaper <b>32</b>	ESL training/ English conversation <b>32</b>	Life skills programs <b>32</b>

*(Number of sessions held in 2017 according to NHV Survey)*